

## Description of the female of the Central Asian trapdoor spider, *Ummidia gandjinoi* (Andreeva, 1968) (Aranei: Ctenizidae)

### Описание самки среднеазиатского паука-землекопа *Ummidia gandjinoi* (Andreeva, 1968) (Aranei: Ctenizidae)

S.L. Zonstein  
С.Л. ЗОНШТЕЙН

Department of Zoology, The George S. Wise Faculty of Life Sciences, Tel-Aviv University, 69978 Tel-Aviv Israel. Email: znn@post.tau.ac.il  
Отдел зоологии, Факультет естественных наук им. Дж. С. Визе, Тель-Авивский университет, 69978 Тель-Авив Израиль.

KEY WORDS: Aranei, spiders, Ctenizidae, *Ummidia*, Central Asia.

КЛЮЧЕВЫЕ СЛОВА: Aranei, пауки, Ctenizidae, *Ummidia*, Средняя Азия.

ABSTRACT. The previously unknown female of *Ummidia gandjinoi*, the only Central Asian congener, is described from the type locality.

РЕЗЮМЕ. Из типового местообитания описывается неизвестная ранее самка единственного среднеазиатского вида этого рода *Ummidia gandjinoi*.

This note provides the first description of the female of *U. gandjinoi*. The species was described by Andreeva [1968] from a single male collected in Gandzhina, Tajikistan, in the genus *Pachylomerus* Ausserer 1871 (preoccupied in the Coleoptera, Scarabaeidae). Later, the species was transferred to *Ummidia* by Brignoli [1983]. New material collected from the type locality contains two conspecific females, which are currently deposited in the Department of Zoology, Tel-Aviv University, Israel.

Abbreviations used in the text: ALE — anterior lateral eye(s), AME — anterior median eye(s), PLE — posterior lateral eye(s), PME — median lateral eye(s); PLS — posterior lateral spinnerets, PMS — posterior median spinnerets. All measurements are in millimeters, except for the eye diameters/interspaces shown as ratio of the microscope scale units at 100<sup>x</sup> magnification. Diameter of an AME is given not only as a diameter of a sharply edged pupil, but also as a diameter of a dome (in the last case — in the brackets). All measurements counting this parameter also are given in the brackets.

*Ummidia gandjinoi* (Andreeva, 1968)  
Figs 1–6.

MATERIAL. TAJIKISTAN: foothills of Aruktau Mt. R., vicinities of Gandzhina, 750–1000 m a.s.l., 37°58'N 68°32'E, 13–19.VI.1986, coll. S. Zonstein, 2 ♀♀.

DESCRIPTION. Female (Fig. 1). Body length including chelicerae 20.30.

Color in alcohol: carapace, palps and legs dorsally hazelnut-brown; legs along medial line and carapace along thoracic fovea and grooves with slightly paler pattern; eye tubercle dark brown, with blackish-brown spots surrounding AME and all lateral eyes; chelicerae uniformly reddish brown; most (central) part of sternum, coxae I–IV and legs III–IV ventrally deep brownish yellow; sternal edges, labium, maxillae, palps and legs I–II ventrally light hazelnut-brown; cheliceral fangs, cuspules and spines dark reddish brown; cheliceral teeth, denticles and tarsal claws blackish brown; abdomen dorsally dark brown with spotted light brown pattern; ventral abdominal surface mainly light brown with sparse, small and diffuse brown spots; genital area, booklungs and spinnerets uniformly pale yellowish brown.

Carapace: length 7.68, width 7.40. Short clypeus and cephalic part with about 20 dark brown setae. Eye group on a low tubercle, arranged as shown in Fig. 4. Ratio of AME, ALE, PLE, PME: 17(23), left 46/right 50, 35, 26. Interspaces: AME-AME 30(22), ALE-AME 47(44), ALE-PLE 37, PLE-PME 10, PME-PME 64.

Chelicerae: furrow with 5–6 promarginal and 6–7 retro-marginal teeth; rastellum with 40–45 stout cone spines on mound; fang in medial part almost indistinctly serrate.

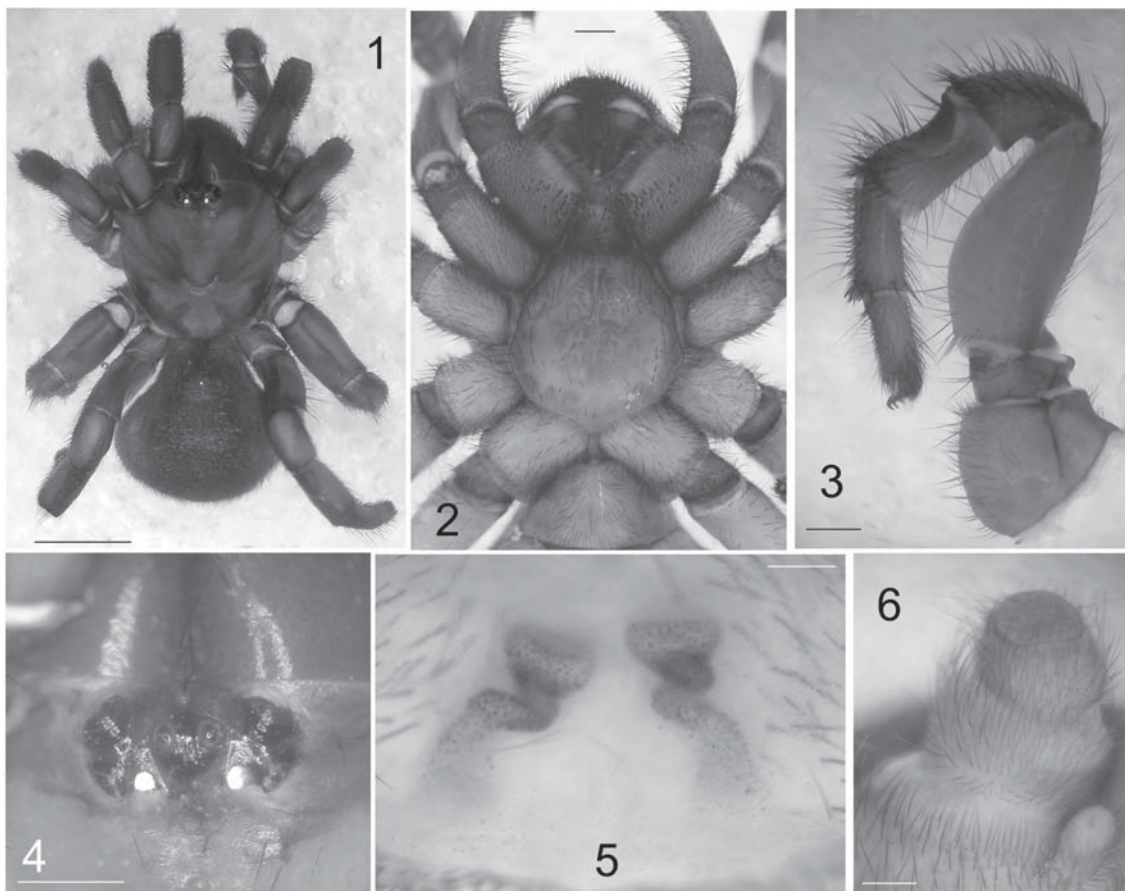
Labium: trapezoidal; length 1.37, width 1.80; with 10 large cone cuspules.

Maxillae: each with two groups of 25–30 cone cuspules; larger cuspules confined mainly to probasal maxillary edge; a group of smaller cuspules located apically (Fig. 2).

Sternum: length 4.72, width 4.70. Sternal sigilla confluent and almost indistinct.

Leg structures. Palps and legs I–II: tibiae, metatarsi and tarsi covered with numerous short tooth-like spines. Excavation on tibia III as shown on Fig. 3. Legs ascopulate. Trichobothria: 2 rows of 6–7 on tibiae; 20–25 on metatarsi; 25–30 on tarsi I, II and IV; 40–45 on tarsus III. Tarsal claws: palpal and paired claws I–IV with 1 large tooth, unpaired claw steeply curved, bare. Leg measurements (palp – legs I – II – II – IV):

Femur	4.82	5.14	4.60	4.13	5.30
Patella	2.62	3.10	2.91	2.82	3.05
Tibia	3.43	3.07	2.77	2.35	3.08
Metatarsus	–	2.35	1.98	2.18	3.55
Tarsus	2.91	1.30	1.32	1.75	2.14
<b>Total</b>	<b>13.78</b>	<b>14.96</b>	<b>13.58</b>	<b>13.23</b>	<b>17.12</b>



Figs 1–6. *Ummidia gandjinoi* (Andreeva, 1968), female: 1 — spider in dorsal view; 2 — sternum, labium, chelicerae, maxillae and leg coxae ventral view; 3 — left leg III retrolateral view; 4 — eye tubercle, dorsal view; 5 — spermathecae; 6 — PLS and PMS ventral view. Scale bars: 1 — 5.0 mm, 2–4 — 1.0 mm, 5–6 — 0.25 mm.

Рис. 1–6. *Ummidia gandjinoi* (Andreeva, 1968), самка: 1 — общий вид паука сверху; 2 — стернум, лабиум, хелицеры, максиллы и коксы ног снизу; 3 — левая нога III ретролатерально; 4 — глазной бугорок сверху; 5 — сперматеки; 6 — PMS и PLS снизу. Масштаб: 1 — 5,0 мм, 2–4 — 1,0 мм, 5–6 — 0,25 мм.

Spermathecae (Fig. 5) entire.  
Spinnerets as in Fig. 6.

ACKNOWLEDGEMENTS. The study was completed thanks to the generous financial assistance from the Ministry of Absorption, Israel.

## References

- Andreeva E.M. 1968. [Materials to the spider fauna of Tadzhikistan. III. Mygalomorphae] // Dokl. AN Tadzh. SSR. Vol.11. No.7. P.68–71 [in Russian].  
Brignoli P.M. 1983. A catalogue of Araneae described between 1940 and 1981. Manchester, 755 pp.