

A redescription of *Damarchus cavernicola* Abraham, 1924,  
with notes on *Damarchus* Thorell, 1891  
and *Atmetochilus* Simon, 1887 (Aranei: Nemesiidae)

Переописание *Damarchus cavernicola* Abraham, 1924,  
с замечаниями по видам *Damarchus* Thorell, 1891  
и *Atmetochilus* Simon, 1887 (Aranei: Nemesiidae)

Sergei L. Zonstein<sup>1</sup>, Yuri M. Marusik<sup>2,3</sup>  
С.Л. Зонштейн<sup>1</sup>, Ю.М. Марусик<sup>2,3</sup>

<sup>1</sup> Department of Zoology, The George S. Wise Faculty of Life Sciences, Tel-Aviv University, 69978 Tel-Aviv, Israel. E-mail: znn@post.tau.ac.il

<sup>2</sup> Institute for Biological Problems of the North RAS, Portovaya Str. 18, Magadan 685000, Russia. E-mail: yurmar@mail.ru

<sup>3</sup> Институт биологических проблем Севера ДВО РАН, Портовая 18, Магадан 685000.

<sup>3</sup> Zoological Museum, University of Turku, FI-20014 Turku, Finland.

KEY WORDS: mygalomorph spiders, taxonomy, cave species, Malaysia.

КЛЮЧЕВЫЕ СЛОВА: мигаломорфные пауки, таксономия, пещерные виды, Малайзия.

**ABSTRACT.** An illustrated redescription of a poorly known nemesiid *Damarchus cavernicola* Abraham, 1924 = *Latouchia batuensis* Roewer, 1962, syn.n., found only in Batu Caves, Malaysia is provided. An Indian species *Damarchus bifidus* Gravely, 1935 is transferred to the related genus *Atmetochilus*, and a new combination *A. bifidus* (Gravely, 1935), comb.n. is established.

**РЕЗЮМЕ.** Дано иллюстрированное переписание малоизвестного немезида *Damarchus cavernicola* Abraham, 1924 = *Latouchia batuensis* Roewer, 1962, syn.n., известного только из пещер Бату (Малайзия). Индийский вид *Damarchus bifidus* Gravely, 1935 переводится в близкий род *Atmetochilus* и устанавливается новая комбинация *A. bifidus* (Gravely, 1935), comb.n.

## Introduction

*Damarchus* Thorell, 1891 is one of two known South-Eastern Asian genera of the mygalomorph spider family Nemesiidae (which includes 43 genera and 367 species distributed worldwide mainly in tropical and subtropical zones). The genus encompasses seven species distributed from Eastern India to Singapore and Sumatra [Platnick, 2014]. Although the genus was redefined and rediagnosed by Raven [1985], it remains rather poorly studied: four species are known by one sex; six species are known by only one taxonomic entry and two species have only verbal descriptions. All species were described in 19th and first third of 20<sup>th</sup> centuries; most of them were not properly illustrated. Only the type species, *D. workmanni* Thorell, 1891, was the subject of a recent study [Raven, 1985]. Within

the genus, the structure of receptacles was shown only for the type species [Raven, 1985: f. 54].

It seems that the real number of species that can be placed in this genus is much higher. Schwendinger [1988] recognized at least six most likely undescribed species in Thailand. While working in Senckenberg-Museum, the senior author found types of *Lautochia batuensis* Roewer, 1962 (Ctenizidae) from Malaysia. This species was poorly described and illustrated. Although there is a paratype female, it was not illustrated, and male palp and mating spur are incorrectly depicted (Figs 16–17). In addition, we recognized that this species was misplaced in the genus and family. Therefore, we decided to redescribe this species and establish a new combination. Further study revealed that *L. batuensis* is a junior synonym of *Damarchus cavernicola* Abraham, 1924, a species described from the same caves. Trying to diagnose *D. cavernicola* we recognized that *D. bifidus* Gravely, 1935 is misplaced in the genus. Goals of this paper are as follows: 1) to provide illustrated redescrptions of the types, 2) to transfer two species to the proper family and genera, and 3) to provide synonymy.

## Material and methods

Photographs were taken in dishes of different sizes with paraffin at the bottom. Specimens were photographed using an Olympus Camedia E-520 camera attached to an Olympus SZX16 stereomicroscope at the Zoological Museum, University of Turku. Digital images were prepared using “CombineZP” image stacking software (<http://www.hadleyweb.pwp.blueyonder.co.uk/>). Illustrations of vulvae were made after macer-

ation in 20% potassium hydroxide aqueous solution and exposure for a few minutes in an alcohol/water solution of Chlorazol Black.

All measurements are given in millimeters (for eyes they are also given in parentheses, when include or count tapetum). The abbreviations used in the text are as follows: ALE — anterior lateral eyes; AME — anterior median eyes; d — dorsal; p — prolateral; PLE — posterior lateral eyes; PLS — posterior lateral spinnerets; PME — median lateral eyes; PMS — posterior median spinnerets; r — retrolateral; v — ventral.

### Taxonomic survey

*Damarchus* Thorell, 1891

Type species: *Damarchus workmanni* Thorell, 1891 from Singapore, by monotypy.

*Damarchus cavernicola* Abraham, 1924  
Figs 1–15.

*Damarchus cavernicola* Abraham, 1924: 1095, Pl. 2, f. 5–7 (♀), in Natural History Museum, London, not examined.

*Latouchia batuensis* Roewer, 1962: 518, f. 1a–c (♂♀), in Senckenberg Museum, Frankfurt am Main, examined. **Syn.n.**

**MATERIAL.** *Latouchia batuensis*, holotype ♂ (SMF R-II/13909/44; examined), Malaysia, Batu Caves 13 km N Kuala Lumpur, 18.10.1960 (Clark). Paratypes: 1♀, 2♀♀ subad., 6 juv., same locality, November 1959 – Nov. 1960, same vial, sample number and depository.

**NOTE.** Vial with holotype contains a label with the name of collector “Clark”, but in the text collector indicated as H.E. McClure.

**DIAGNOSIS.** *Damarchus cavernicola* can be distinguished from all described congeners by the following characters:

*D. montanus* (Thorell, 1890) differs from the *D. cavernicola* by the shape of the eye group (AMEs are largest and very closely spaced from each other), female with more densely toothed paired claws on tarsi I–II (5–7 teeth per row); on the contrary, paired tarsal claws of leg IV armed only with 1–2 teeth [cf. Thorell, 1890: 406] vs. 4–5 and 3 in females of *D. cavernicola*;

*D. workmanni* Thorell, 1891 differs by the shape of the eye group (by larger and more closely spaced AMEs), and additionally by longer ventroapical process on male tibia I, and by shorter embolus [cf. Thorell, 1891: 15; Figs 17–21];

*D. oathesi* Thorell, 1895 unlike the *D. cavernicola* possesses has darker coloration (blackish to brownish-black carapace both in male and female), and more pectinate paired claws (12 teeth vs. 5–6), it also has embolus dilated subapically (tapered in other species) [cf. Thorell, 1895: 3–4];

*D. assamensis* Hirst, 1909 differs from *D. cavernicola* by different shape of the mating spur (with longer megaspine), as well as by more thin and less curved embolus (Figs 23–24);

*D. excavatus* Gravely, 1921 differs from *D. cavernicola* by different shape of the mating spur (with very

Table. Length of leg and palp joints in holotype ♂ and paratype ♀ (in parentheses) of *Latouchia batuensis*.  
Таблица. Length of leg and palp joints in holotype ♂ and paratype ♀ (in parentheses) of *Latouchia batuensis*.

|      | Femur          | Patella        | Tibia          | Metatarsus     | Tarsus         | Total            |
|------|----------------|----------------|----------------|----------------|----------------|------------------|
| Palp | 3.30<br>(3.03) | 1.65<br>(1.25) | 2.78<br>(2.07) | □              | 1.07<br>(2.13) | 8.80<br>(8.48)   |
| I    | 7.27<br>(4.97) | 3.40<br>(2.57) | 6.53<br>(3.90) | 6.27<br>(3.43) | 3.30<br>(2.05) | 26.77<br>(17.10) |
| II   | 6.47<br>(4.25) | 3.07<br>(2.43) | 5.77<br>(3.07) | 6.20<br>(3.10) | 3.15<br>(1.97) | 24.66<br>(15.52) |
| III  | 5.45<br>(3.27) | 2.43<br>(1.90) | 4.27<br>(2.17) | 6.47<br>(3.03) | 2.75<br>(1.67) | 21.37<br>(12.04) |
| IV   | 7.97<br>(3.05) | 2.90<br>(0.83) | 6.78<br>(2.57) | 9.62<br>(2.18) | 3.23<br>(1.30) | 30.50<br>(18.73) |

thick single megaspine), and, especially, by metatarsus I provided with basoventral process [Gravely, 1921, f. 7f].

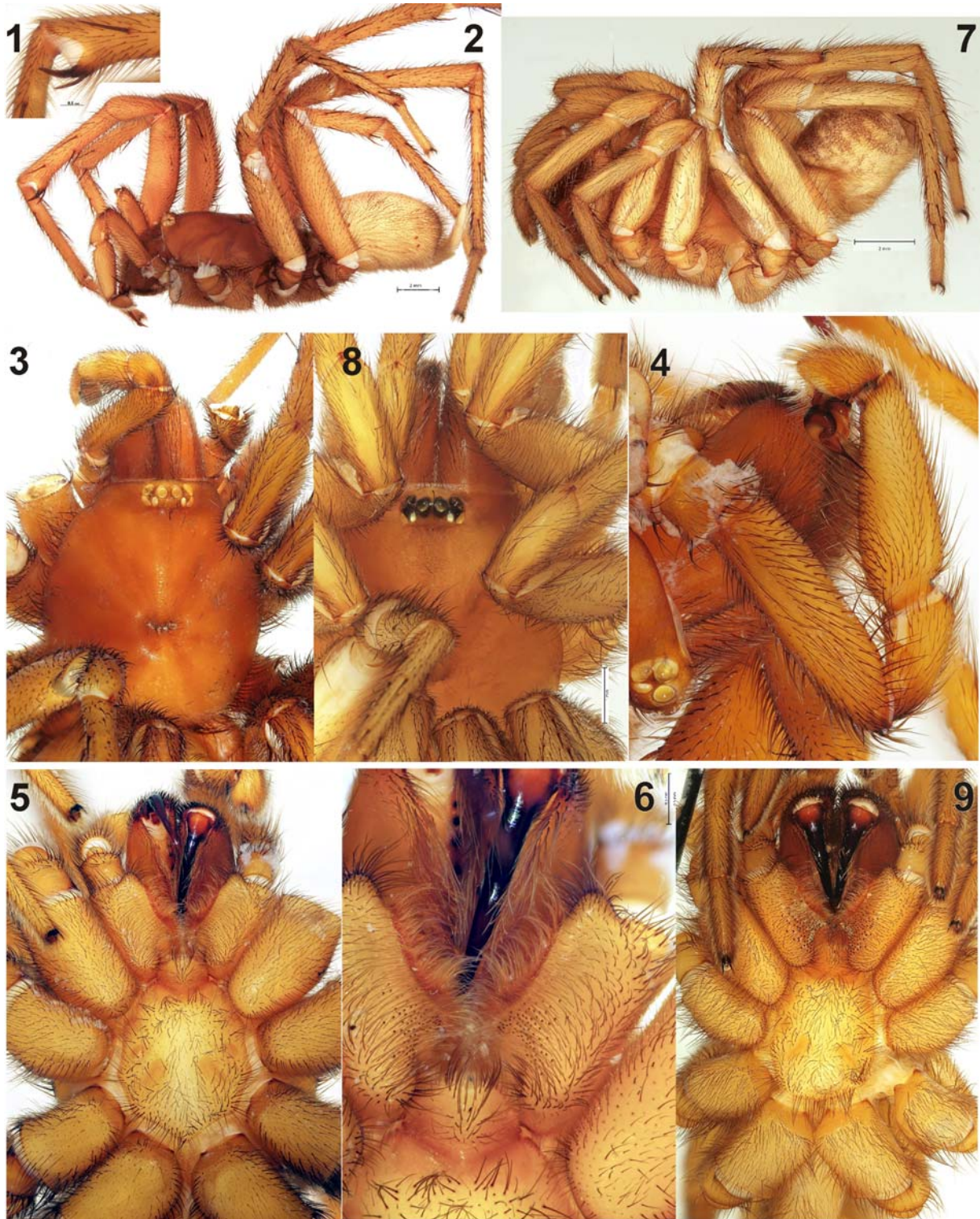
**DESCRIPTION.** **Male** (holotype of *Latouchia batuensis*). Body length 15.20. Colour in alcohol: carapace intensive light brownish-orange with eye group not darkened; chelicerae brownish-orange; labium, sternum, maxillae, pedipalps and legs almost uniformly light reddish-brown; abdomen with spinnerets light greyish-yellow, dorsal pattern not developed.

General appearance as in Fig. 2. Carapace (Fig. 3) 6.55 long, 1.63 wide. Eye diameters: AME 0.29 (0.37), ALE 0.38, PLE 0.33, PME 0.27. Interdistances: AME–AME 0.11 (0.06), AME–ALE 0.17 (0.13), ALE–PLE 0.02, PLE–PME 0.03, PME–PME 0.65. Chelicerae without rastellar mound, rastellum composed by 12–15 thick bristles located in front of fang base. Cheliceral furrow with 8 promarginal teeth and about 25 meso-basal denticles. Labium 0.83 long, 1.13 wide, without cuspules. Maxillae with ca. 80 small cuspules each (Figs 5–6). Sternum (Fig. 5) 3.42 long, 3.03 wide. Leg measurements as shown in Table.

Spination (femora III–IV with 3–4 dorsal bristles – underdeveloped spines; all patellae except III, cymbium and tarsi I–IV aspinose). Pedipalp: femur d0–1–1–1, p0–0–1; tibia p0–1–1, v0–0–1. Leg I: femur d0–1–1–1, p1–1–1; tibia p0–1–1, v1–2–2 + megaspine on raised process; metatarsus p1–0–0, v1–1–2. Leg II: femur d1–1–1, p1–1–1; tibia p0–1–1, v1–1–2; metatarsus p1–0–0, v1–1–2. Leg III: femur p1–1–1; tibia d0–1, p1–1, r1–1, v1–2–3; metatarsus d0–1–1, p1–1–1, r1–1–1, v1–1–2–2. Leg IV: femur r1–1–1; tibia d0–1–0–0, p0–1–0, r1–0–0, v1–1–2; metatarsus d0–1–0, p1–1–1, r1–1–1, v2–2–1–2. Mating spur as shown in Fig. 1.

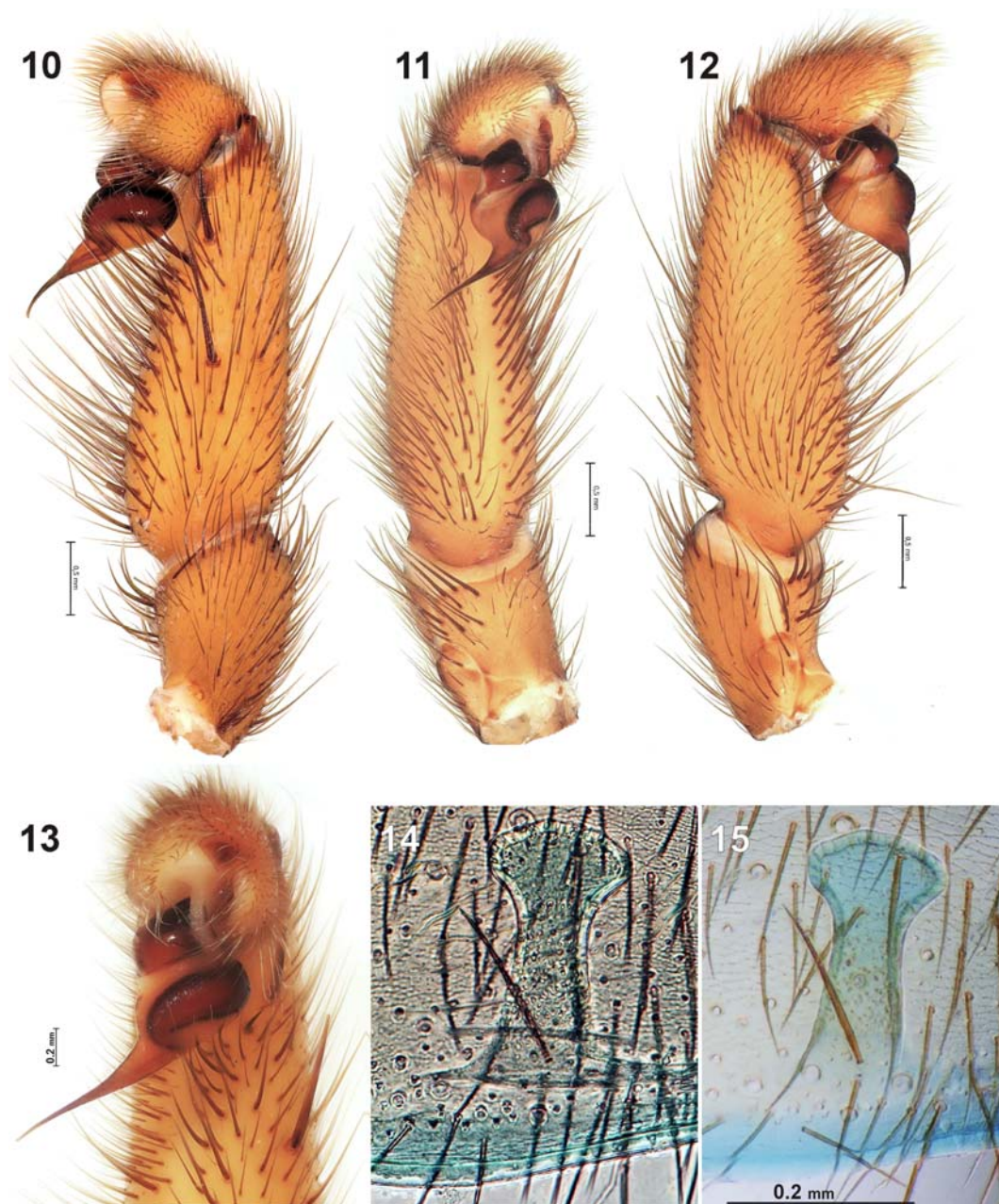
Scopula: distal on metatarsi I–II, entire on tarsi I–II, mixed with short bristles on tarsus III, elsewhere absent. Trichobothria: 2 rows of 7–8 per row on tibiae, 11–13 on metatarsi, 11–12 on tarsi, 8 on cymbium. Paired claws with one S-shaped row of 5–6 teeth. Unpaired claw on tarsi I–IV sharply curved.

Palp as shown in Figs 4, 10–13; femur longer than tibia, tibia wide in the base and thinner in terminal part, embolus as long as bulbus diameter, straight in dorsal view.



Figs 1–9. Somatic characters of *Damarchus cavernicola* male (1–6) and female (7–9): 1 — mating spur on tibia I, prolateral; 2, 7 — habitus, lateral; 3, 8 — prosoma, dorsal; 4 — terminal part of prosoma showing palp, lateral; 5, 9 — prosoma, ventral; 6 — mouth parts, ventral.

Рис. 1–9. Соматические признаки *Damarchus cavernicola*: самец (1–6) и самка (7–9): 1 — совокупительная шпора на голени I, пролатерально; 2, 7 — габитус, сбоку; 3, 8 — головогрудь, сверху; 4 — передняя часть головогруды с пальпой, сбоку; 5, 9 — головогрудь, снизу; 6 — ротовой аппарат, снизу.



Figs 10–15. Copulatory organs of *Damarchus cavernicola*: 10–12 — male palp, retrolateral, ventral and prolateral; 13 — male palp, from above; 14–15 — receptacle as it seen in transmitting (14) and reflecting (15) microscopes.

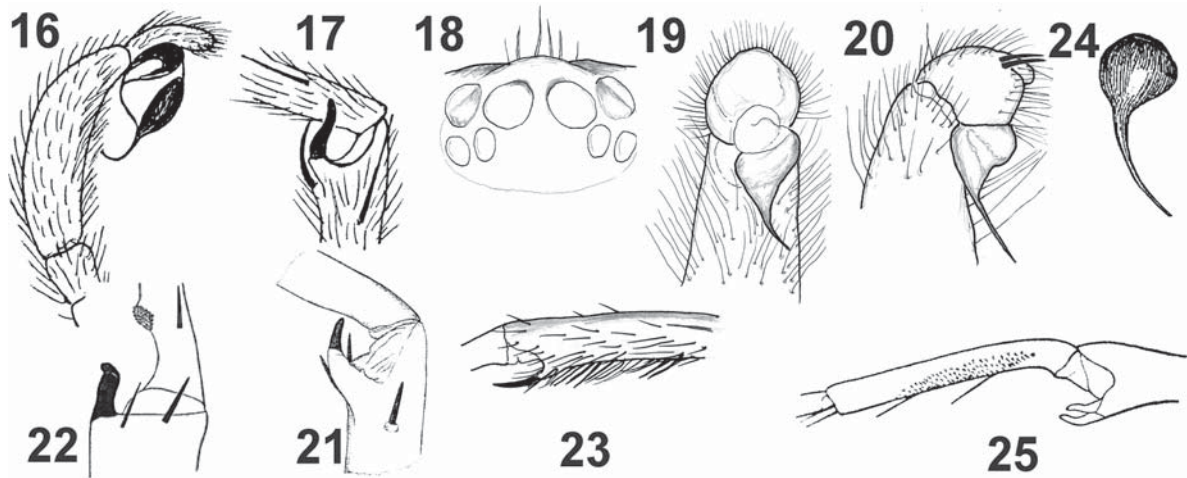
Рис 10–15. Копулятивные органы *Damarchus cavernicola*: 10–12 — пальпа самца, ретролатерально, снизу и пролатерально; 13 — пальпа самца, сверху; 14–15 — рецептакула снятая на просвечивающем микроскопе (14) и бинокуляре (15).

**Female** (paratype of *Latouchia batuensis*): Body length, including chelicerae, 13.2. Colour in alcohol as in male but dorsal abdominal pattern, consisting of numerous irregular light greyish-yellow spots on slightly darker brownish background, better developed.

General appearance as in Fig. 7. Carapace (Fig. 8) 5.63 long, 4.60 wide. Eye diameters: AME 0.21 (0.27), ALE 0.30, PLE 0.22, PME 0.15. Interdistances: AME–AME 0.13 (0.07), AME–ALE 0.12 (0.09), ALE–PLE 0.06, PLE–PME 0.03, PME–PME 0.57. Chelicerae

without rastellar mound, rastellum composed by 10–12 thick bristles located in front of fang base. Cheliceral furrow with 8 promarginal teeth and 25–30 mesobasal denticles. Labium 0.70 long, 0.97 wide, with 3 cuspules. Maxillae with *ca.* 90 cuspules each (Fig. 9). Sternum (Fig. 9) 2.80 long, 2.37 wide. Leg measurements as shown in Table.

Spination (all femora with 3–4 dorsal bristles – underdeveloped spines; all patellae except III and tarsi I–IV aspinose). Pedipalp: femur p0–0–1; tibia v1–1–2;



Figs 16–25. *Damarchus cavernicola* (16–17, after Roewer [1962]), *D. workmanni* (18–21, after Gravely [1935]), *D. excavatus* (22, after Gravely [1921]), *D. assamensis* (23–24, after Hirst [1909]) and *Atmetochilus bifidus* (25, after Gravely [1935]): 16, 20 — male palp, prolatateral; 17, 21–23 — mating spur, prolatateral; 18 — male eye tubercle, dorsal; 19 — male palp, ventral; 24 — bulbus, ventral; 25 — mating spur and metatarsus, prolatateral.

Рис 16–25. *Damarchus cavernicola* (16–17, по Roewer [1962]), *D. workmanni* (18–21, по Gravely [1935]), *D. excavatus* (22, по Gravely [1921]), *D. assamensis* (23–24, по Hirst [1909]) и *Atmetochilus bifidus* (25, по Gravely [1935]): 16, 20 — пальпа самца, пролатерально; 17, 21–23 — копулятивная шпора, пролатерально; 18 — глазной бугорок самца, дорзально; 19 — пальпа самца, снизу; 24 — бульбус, снизу; 25 — копулятивная шпора голени и предлапка I, пролатерально.

tarsus v2–0. Leg I: femur p0–0–1; tibia v1–1–1(0); metatarsus v1–1–2. Leg II: p0–0–1; tibia v1–1–0; metatarsus v1–1–2. Leg III: femur p0–0–1, r0–1–1; patella p1–1–2; tibia d1–1, p1–1–1, r1–1, v2–2–3; metatarsus d1–1, p1–1–1, r1–1–1, v2–2–3. Leg IV: femur p0–0–1; r0–0–1; tibia r1–1–1, v2–2–2; metatarsus p1–1–1; r1(0)–1–1, v2(1)–2–1–2.

Scopula: distal on metatarsi I–II, entire on palpal tarsus and tarsi I–II, elsewhere absent. Trichobothria: 2 rows of 8–10 per row on tibiae, 14–16 on metatarsi, 11–12 on tarsi, 8 on palpal tarsus. Paired claws of tarsi I–III with two juxtaposed rows of 4–5 teeth per row; paired claws of tarsi IV with only one outer row composed of 3 teeth. Unpaired claw on tarsi I–IV sharply curved. Palpal claw with 4 promarginal teeth. Receptacles as in Figs 14–15, simple, undivided, fungiform, about 0.3 long; head twice wider than stem.

Spinnerets. PMS: length 0.32; diameter 0.13. PLS: maximum diameter 0.37; length of basal, medial and apical segments 0.59, 0.37, 0.50; total length 1.46; apical segment digitiform.

COMMENTS. Roewer [1962] placed his new species into *Latouchia* Pocock, 1901, a genus belonging to Ctenizidae. He did not provide any comments or arguments in support of such obviously incorrect placement. Most likely due to wrong placement on the new species, he overlooked a publication by Abraham [1924] in which *Damarchus cavernicola* was described from the same cave.

While he described an already existing species, Roewer [1962] allocated it correctly, but only on the family level. Both *Latouchia* and *Damarchus* Thorell,

1891 were members of the same family, Ctenizidae, until Raven [1985] transferred the latter genus, together with many other “ctenizid” genera, to Nemesiidae.

Nevertheless, it is unclear why the species was assigned to *Latouchia*, which is diagnosed like other Ctenizinae by modified chelicerae with rastellar mound, legs armed with numerous thorn-like spines, spinose tarsi, one to few teeth arranged in a single row on the paired tarsal claws both in males and females and considerably shortened PLS with domed apical segment. None of these characters can be found in types of *L. batuensis* (see the redescription above). On the contrary, many somatic characters, including the eye arrangement and dentition of the cheliceral furrow in *L. batuensis* wholly correspond to those in *D. cavernicola* [cf. Abraham, 1924, Pl. 2, f. 5, 6a–b]. Hence, we conclude that the Roewer’s name should be placed into synonymy of the latter species.

DISTRIBUTION. Known only from the type locality.

*Atmetochilus* Simon, 1887

Type species: *Atmetochilus fossor* Simon, 1887 from Myanmar, by monotypy.

COMMENTS. Until recently only two species have been assigned to this genus: *A. atriceps* Pocock, 1900 and *A. fossor*. Both species are known by females and from Myanmar only. Only habitus figure was provided for the type species [Simon, 1892, f. 73]. *Atmetochilus atriceps* was revised and redescribed by Raven [1985].

*Atmetochilus bifidus* (Gravely, 1935), **comb.n.**  
Fig. 25.

*Damarchus b.* Gravely, 1935: 70, f. 1a (♂).

COMMENTS. We recognized that this species, originally placed in *Damarchus*, obviously belongs to *Atmetochilus* thanks to the figure provided by Gravely [1935] and shown in Fig. 25. Although males are not known in *Atmetochilus*, we are convinced in this placement due to the ongoing revision of this taxon. Undescribed males of this genus have twin spurs and a flattened metatarsus with small spines.

ACKNOWLEDGEMENTS. We thank Peter Jäger and Julia Altmann (Frankfurt am Main) who kindly lent for our study the type series of *Latouchia batuensis* Roewer, 1962. Special thanks are to Seppo Koponen (University of Turku) for providing museum facilities. Helpful comments on a draft of the manuscript were provided by Mykola M. Kovblyuk (Simferopol), Kadir B. Kunt and Ersen A. Yađmur (Turkey). The English of the final draft was kindly checked and corrected by Victor Fet (Marshall University, USA). This study was supported in part by the Ministry of Absorption, Israel and the Russian Foundation for Basic Research (grant # 12-04-01548).

## References

- Abraham H.C. 1924. Some mygalomorph spiders from the Malay Peninsula // Proc. Zool. Soc. Lond. Vol.[1924]. P.1091–1124.
- Gravely F.H. 1921. The spiders and scorpions of Barkuda Island // Rec. Indian Mus. Calcutta. Vol.22. P.399–421.
- Gravely F.H. 1935. Notes on Indian mygalomorph spiders. II. // Rec. Ind. Mus. Calcutta. Vol.37. P.69–84.
- Hirst A.S. 1909. On some new or little-known mygalomorph spiders from the Oriental Region and Australasia // Rec. Ind. Mus. Calc. Vol.3. P.383–390.
- Raven R.J. 1985. The spider infraorder Mygalomorphae (Araneae): Cladistics and systematics // Bull. Am. Mus. nat. Hist. Vol.182. P.1–180.
- Roewer C.F. 1962. Einige Arachniden aus den Batu-Caves in Malaya // Pacif. Insects. Vol.4. P.517–520.
- Schwendinger P. 1988. Biological observations on orthognathous spiders in northern Thailand (Araneae: Mesothelae, Mygalomorphae) // Haupt J. (ed.). XI. Europäisches Arachnologisches Colloquium. Berlin: TUB-Dokumentationen, Kongresse und Tagungen. Vol.38. P.231–236.
- Thorell T. 1890. Studi sui ragni Malesi e Papuani. IV // Ann. Mus. civ. stor. nat. Genova. T.28. P.1–419.
- Thorell T. 1891. Spindlar från Nikobarerna och andra delar af södra Asien // Kongl. Svenska. Vet.-Acad. Handl. Vol.24. Nr.2. P.1–149.
- Thorell T. 1895. Descriptive catalogue of the spiders of Burma. London. 406 p.

*Responsible editor S. Koponen*