

## On the spider (Aranei) fauna of the Pechoro-Ilychskiy Reserve (North Urals), with the description of a new *Agroeca* species (Liocranidae)

### К познанию фауны пауков (Aranei) Печоро-Ильчского заповедника с описанием нового вида из рода *Agroeca* (Liocranidae)

S.L. Esyunin<sup>1</sup>, D.K. Kazantsev<sup>2</sup>  
С.Л. Есюнин<sup>1</sup>, Д.К. Казанцев<sup>2</sup>

<sup>1</sup>Perm State University, Bukireva Str. 15, Perm 614990 Russia.

Пермский государственный университет, ул. Букирева 15, Пермь 614990 Россия.

<sup>2</sup>Pechoro-Ilychskiy Reserve, Yaksha vil., Troitsko-Pechorsk Distr., Komi Republica 169436 Russia.

Печоро-Ильчский заповедник, пос. Якша, Троицко-Печорский р-н, Республика Коми 169436 Россия.

KEY WORDS: spiders, fauna, Russia, the Urals *Agroeca* new species.

КЛЮЧЕВЫЕ СЛОВА: пауки, фауна, Россия, Урал, новый вид.

ABSTRACT. A list of 68 species, new to the Pechoro-Ilychskiy Reserve, is given. A new species, *Agroeca makarova* sp.n. (♂♀), is described from Komi Republic and Orenburg Area. 15 species are new to the fauna of the North Urals. *Pirata praedo* Kulczyński, 1885 is recorded from the Urals for the first time.

РЕЗЮМЕ. Приведен список 68 видов новых для фауны Печоро-Ильчского заповедника. Новый вид *Agroeca makarova* sp.n. (♂♀) описан из Коми Республики и Оренбургской области. 15 видов являются новыми для фауны Северного Урала, а *Pirata praedo* Kulczyński, 1885 впервые обнаружен на Урале.

#### Introduction

The Pechoro-Ilychskiy Reserve lies in the upper reaches of Ilych and Pechora Rivers (Troitsko-Pechorsk Distr., Komi Republic, North Urals). The territory of the reserve is subdivided in two parts covering all three natural zones: plains, foothills and mountains. Although the first spider record of *Steatoda bipunctata* (Linnaeus, 1758) from the territory where the reserve is now was published a long time ago [Simon, 1891], regular studies began only in the 1980s. In some papers by N.M. Pakhorukov and his co-authors [Vasilevitch, Pakhorukov, 1975; Utochkin, Pakhorukov, 1976; Pakhorukov, Utochkin, 1977, 1977a; Pakhorukov, 1979, 1980, 1980a, 1981], first data on the spider fauna of reserve were given. Later, the fragmentary information on new findings of various spider species was published by

Ovtsharenko [1982], Utochkin [1988] and Esyunin [Esyunin, Efimik, 1996; Esyunin, 2006]. As a result of these investigations, 198 spider species are recorded from the plain zone of the reserve. The mountain part of the reserve has not been investigated until recently.

The present paper is based on the material collected by D.K. Kazantsev (DK in text) and A.A. Kolesnikova in 2007, as well as by O.L. Makarova in 2003, in the four localities within the reserve (only corresponding numbers of these localities are given in the text):

1. Yaksha village and its vicinity (the plain zone of the reserve; 61°50'N; 56°50'E).

2. The environs of Garevka Station and Shezhym-Pechorskij cordon (62°03'N; 58°28'E).

3. The south-east slope of Yanyupuner Ridge (62°05'N; 59°05'E).

4. The upper reaches of Kozhym-Yu River and Saran-Iz and Makar-Iz Ridges (63°09'N; 59°02'E).

The aim of this paper is to publish new data on the spider fauna of reserve and to describe a new species of the genus *Agroeca*. A list of 68 species new to the Pechoro-Ilychskiy Reserve is given below. Of them, one is described as new, one is new to the fauna of the Urals and 15 are new to the fauna of the North Urals (these are marked in the list by asterisk). The revised spider list of the Pechoro-Ilychskiy Reserve numbers 263 species.

Type material is shared between the collections of the Zoological Museum of the Moscow State University (ZMUM) and the Department of Zoology of the Perm State University (PSU). Some materials have been deposited in the collections of the Museum of the Pechora-Ilychskiy Reserve and at the PSU. The measurements are in millimeters.

## Check-list of spiders

## Fam. ARANEIDAE

*Araneus alsine* (Walckenaer, 1802)\*

MATERIAL. 1 ♂, 4, *Abies* forest with whortleberry (*Vaccinium myrtillus*), VIII.2007, DK.

*Araneus sturmi* (Hahn, 1831)\*

MATERIAL. 1 ♀ (PSU-4649), 1, bottomland meadow, 03.VII.2007, DK; 2 ♂♂, 8 ♀♀, 2, *Picea* forests with green moss or with whortleberry (*Vaccinium myrtillus*) and green moss, bottomland herbage *Picea* forest, meadow, VI & VIII.2007, DK.

*Araniella displicata* (Hentz, 1847)

MATERIAL. 2 ♀♀, 2, bog with dwarf *Betula* and grass, VI & VIII.2007, DK.

*Singa nitidula* (C.L. Koch, 1844)\*

MATERIAL. 4 ♀♀, 2, meadow, VI & VIII.2007, DK.

## Fam. CLUBIONIDAE

*Clubiona neglecta* (O. Pickard-Cambridge, 1862)

MATERIAL. 3 ♂♂, 2, bottomland herbaceous *Salix-Alnus* thicket, VI & VIII.2007, DK.

*Clubiona norvegica* Strand, 1900

MATERIAL. 1 ♀ (PSU-4377), 4, multiherbaceous *Betula* forest, 19.VII.2007, Kolesnikova Å.Å.

REMARKS. The record of *C. norvegica* from the vicinity of Perm by Esyunin & Efimik [1995] is actually referred to *C. stagnatilis* Kulczyński, 1897. Thus, the known southern border of the *C. norvegica* range in the Urals passes across the North Urals [Pakhorukov, 1977; present data].

*Clubiona stagnatilis* Kulczyński, 1897

MATERIAL. 1 ♀ (PSU-3262), 1, *Pinus* forest with *Sphagnum*, 23–27.IX.2003, Ī.L. Makarova.

## Fam. GNAPHOSIDAE

*Drassylus lutetianus* (L. Koch, 1866)\*

MATERIAL. 1 ♂, 2, bog with dwarf *Betula* and grass, VI.2007, DK.

*Gnaphosa sticta* Kulczyński, 1908

MATERIAL. 1 ♂, 3, mountain lichen tundra with crowberry (*Empetrum nigrum*), VI.2007, DK.

*Haplodrassus cognatus* (Westring, 1861)

MATERIAL. 1 ♂, 1 ♀ (PSU-4636), 1, *Picea* forests with whortleberry (*Vaccinium myrtillus*) and green moss, 06–09.VII.2007, DK.

*Micaria aenea* Thorell, 1871\*

MATERIAL. 1 ♀ (PSU-4634), 1, *Sphagnum* bog with *Ledum*, 04–08.VII.2007, DK.

*Micaria alpina* L. Koch, 1872

MATERIAL. 1 ♂, 3, mountain lichen tundra with crowberry (*Empetrum nigrum*), VI.2007, DK.

*Micaria pulicaria* (Sundevall, 1831)

MATERIAL. 2 ♂♂, 3, talus (Siberian name “kurumy”), VI.2007, DK.

*Micaria tripunctata* Holm, 1978

MATERIAL. 4 ♂♂, 1 ♀, 4, *Sphagnum* bog with *Carex*, paludal birch (*Betula*) forest, elfin woodland of *Betula*, mountain tundra with moss and grass or with green moss, lichen and whortleberry (*Vaccinium myrtillus*), VII.2007, DK.

*Zelotes subterraneus* (C.L. Koch, 1833)

MATERIAL. 2 ♂♂, 4, mountain tundra with green moss, lichen and whortleberry (*Vaccinium myrtillus*), VII.2007, DK.

## Fam. LINYPHIIDAE

*Agyneta affinis* (Kulczyński, 1898)\*

MATERIAL. 1 ♂ (PSU-4635), 1, without biotopes, V.2007, DK.

*Allomengea scopigera* (Grube, 1889)

MATERIAL. 31 ♀♀ (PSU-3245), 1, beach bank of river, *Picea* forest with green moss, 23.IX.2003, O.L. Makarova.

*Bathypantes eumenis* (L. Koch, 1879)

*B. eumenis*: Pakhorukov & Utochkin, 1977b, p. 907, fig. 1 (♀).

*Bathypantes eumenis*: Wozny & Szajka, 1985, p. 575, figs 1–5 (♂♀)

MATERIAL. 5 ♀♀ (PSU-4639), 1, creek of Malaya Garevka River, bottomland *Picea* forest with high-herbage, 30.VI–02.VII.2007, DK.

REMARKS. This species has been recorded from the Pechoro-Ilychskiy Reserve and also figured by Pakhorukov [Pakhorukov & Utochkin, 1977b; Pakhorukov, 1980]. In 1985, Wozny & Czajka [1985] showed that *Bathypantes simillimus* (L. Koch, 1879) should be a synonym of *B. eumenis*. Contrary, Eskov [1994] did not support the opinion on the identity of these species and considered Pakhorukov's records as *B. simillimus*. We and our colleagues [Tanasevitch and Marusik, personal comm.] are in favour of Wozny & Szajka's viewpoint, and have therefore identified our specimens as the Holarctic boreal species, *B. eumenis*.

*Ceratinella scabrosa* (O. Pickard-Cambridge, 1871)\*

MATERIAL. 1 ♀, 2, mossy *Picea* forest with wood sorrel (*Oxalis acetocellus*), fern and whortleberry (*Vaccinium myrtillus*), VI.2007, DK.

*Ceratinella wideri* (Thorell, 1871)\*

MATERIAL. 1 ♀, 3, elfin woodland of *Betula*, VI.2007, DK.

*Cnephalocotes obscurus* (Blackwall, 1834)

MATERIAL. 2 ♂♂, 2 ♀♀ (PSU-4644), 1, bog with *Ledum*, 20.V.2007, DK; 4 ♂♂, 3 ♀♀, 3, mountain tundra with moss and grass or with lichen and crowberry (*Empetrum nigrum*), talus (Siberian name “kurumy”), VI.2007, DK.

*Decipiphantes decipiens* (L. Koch, 1879)

MATERIAL. 1 ♂ (PSU-4638), 1, paludal *Picea* forest, 26.VII.2007, DK.

*Diplocentria bidentata* (Emerton, 1882)

MATERIAL. 1 ♂, 2, forest, VIII.2007, DK.

*Diplocephalus cristatus* (Blackwall, 1833)

MATERIAL. 2 ♂♂, 1 ♀ (PSU -3270), 1, beach bank of river, 23.IX.2003, O.L. Makarova.

- Diplocephalus picinus* (Blackwall, 1841)  
MATERIAL. 1 ♀, 2, mossy *Picea* forest with wood sorrel (*Oxalis acetocellus*), fern and whortleberry (*Vaccinium myrtillus*), VIII.2007, DK.
- Dismodicus bifrons* (Blackwall, 1841)  
MATERIAL. 1 ♀, 2, bottomland *Picea* forest with herbage, VIII.2007, DK.
- Dismodicus elevatus* (C.L. Koch, 1838)  
MATERIAL. 2 ♂♂, 2, herbage bog with dwarf *Betula*, VI.2007, DK.
- Glyphesis cottonae* (LaTouch, 1946)\*  
MATERIAL. 2 ♂♂ (PSU-4637), 1, without biotope, V.2007, DK; 1 ♂ (PSU-4329), 3, herbage bog with dwarf *Betula* and cotton grass (*Eriophorum*), VI.2007, DK.
- Hilaira nubigena* Hull, 1911  
MATERIAL. 2 ♀♀, 4, *Sphagnum* bog with dwarf *Betula* and rush (*Juncus*), VII.2007, DK.
- Macrargus rufus* (Wider, 1834)  
MATERIAL. 1 ♂ (PSU-3285), 1, *Picea* forest with *Sphagnum*, 23–27.IX.2003, O.L. Makarova; 2 ♂♂, 1, paludal *Picea* forest, *Betula-Pinus* forest, 22–26.V.2007, DK.
- Metopobactrus prominulus* (O. Pickard-Cambridge, 1872)  
MATERIAL. 1 ♀ (PSU-4645), 1, paludal *Pinus* forest, 28.V.2007, DK; 1 ♂, 4, *Sphagnum* bog with dwarf *Betula* and rush (*Juncus*), VII.2007, DK.
- Micrargus herbigradus* (Blackwall, 1854)  
MATERIAL. 1 ♂, 1 ♀ (PSU-3253), 3 km to the East of 1, *Picea* forest with green moss, 23.IX.2003, O.L. Makarova.
- Minyriolus pusillus* (Wider, 1834)  
MATERIAL. 3 ♂♂, 1 ♀ (PSU-4646), 1, *Pinus* forest with *Cladonia* and *Betula-Pinus* forest, 22 & 28.V.2007, DK.
- Oedothorax agrestis* (Blackwall, 1853)  
MATERIAL. 6 ♂♂, 50 ♀♀ (PSU-3264), 1, beach bank of river, 23.IX.2003, O.L. Makarova.
- Panamomops dybowskii* (O. Pickard-Cambridge, 1873)  
MATERIAL. 1 ♀, 1, creek of Malaya Garevka River, bottomland *Picea* forest with high-herbage, 30.VI–02.VII.2007, DK.
- Pelecopsis mengei* Kulczyński, 1887  
MATERIAL. 19 ♀♀, 4, *Abies* forest with whortleberry (*Vaccinium myrtillus*), *Sphagnum* bog with *Carex*, low-grasses meadow, mossy dwarf *Betula* stand, VII.2007, DK.
- Scotinotylus alpigenuus* (L. Koch, 1869)  
MATERIAL. 2 ♂♂ (PSU-3258), 3 km to the East of 1, *Picea* forest with green moss, 23.IX.2003, O.L. Makarova.
- Semljicola latus* (Holm, 1939)  
MATERIAL. 2 ♂♂, 1 ♀ (PSU-4643), 1, without biotope, VI.2007, DK; 2 ♀♀, 2, *Picea* forest with green moss, VIII.2007, DK.
- Semljicola thaleri* (Eskov, 1981)\*  
MATERIAL. 2 ♂♂ (PSU-4650), 1, without biotope, V.2007, DK.
- Silometopus uralensis* Tanasevitch, 1985\*  
MATERIAL. 2 ♂♂ (PSU-4328), 2, forest, VI.2007, DK.
- Stemonyphantes conspersus* (L. Koch, 1879)  
MATERIAL. 1 ♂, 1 ♀, 2, without biotope, VIII.2007, DK.
- Styloctetor stativa* (Simon, 1881)\*  
MATERIAL. 2 ♂♂ (PSU-4648), 1, without biotope, V.2007, DK; 3 ♂♂, 2 ♀♀, 2, bog with dwarf *Betula* and grass, VIII.2007, DK.
- Tenuiphantes nigriventris* (L. Koch, 1879)  
MATERIAL. 1 ♂, 8 ♀♀, 4, *Abies* forest with high-herbage, *Betula* forest with grass and various herbs, mossy dwarf *Betula* stand, VII.2007, DK.
- Trichopterna thorelli* (Westring, 1861)\*  
MATERIAL. 2 ♂♂ (PSU-4301), 2, grassy bog with dwarf *Betula*, VI.2007, DK.
- Walckenaeria antica* (Wider, 1834)  
MATERIAL. 2 ♂♂, 2 ♀♀, 2, *Picea* forest with green moss and whortleberry (*Vaccinium myrtillus*), VI & VIII.2007, DK.
- Walckenaeria capito* (Westring, 1861)  
MATERIAL. 1 ♂, 4, mountain meadow with ferns, VII.2007, DK.
- Walckenaeria cuspidata* (Blackwall, 1833)  
MATERIAL. 1 ♀, 2, bottomland *Picea* forest with various herbs, VIII.2007, DK.
- Walckenaeria karpinskii* (O. Pickard-Cambridge, 1873)  
MATERIAL. 3 ♂♂, 2 ♀♀ (PSU-4642), 1, paludal *Picea* forest, bottomland *Picea* forest with high-herbage, *Betula-Pinus* forest, V & VII.2007, DK; 4 ♂♂, 1 ♀, 2, mountain tundra, VI & VIII.2007, DK.
- Walckenaeria nudipalpis* (Westring, 1851)  
MATERIAL. 1 ♀, 2, *Picea* forest with green moss, VIII.2007, DK; 2 ♀♀, 3, *Abies* forest with high-herbage, low-grasses meadow, VII.2007, DK.
- Zornella cultrigera* (L. Koch, 1879)  
MATERIAL. 2 ♀♀ (PSU-3246), 1, *Pinus* and *Picea* forests with *Sphagnum*, 23–27.IX.2003, O.L. Makarova.

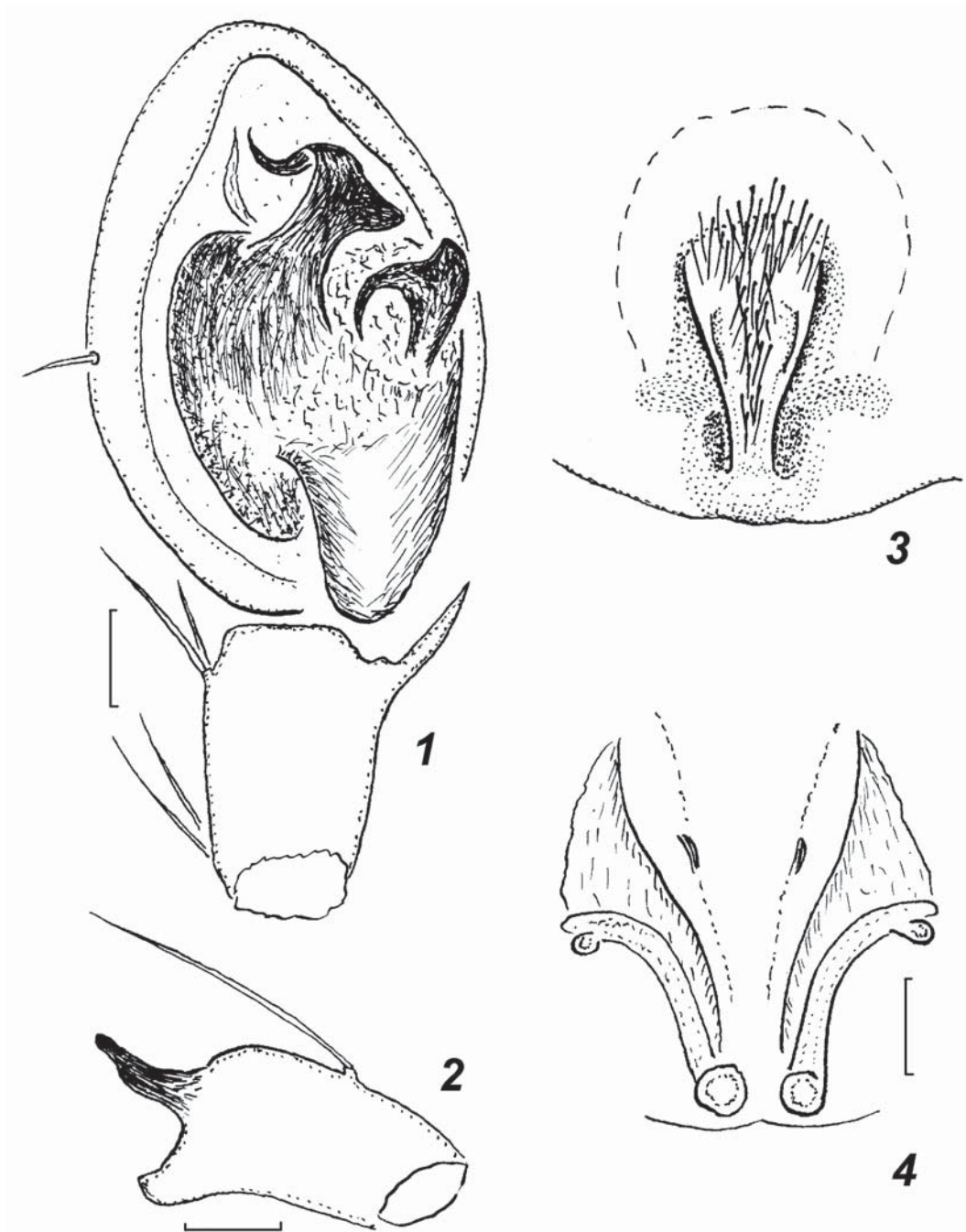
## Fam. LIOCRANIDAE

*Agroeca makarovae* Esyunin sp.n.

Figs 1–4.

MATERIAL. Holotype ♂ (ZMUM), c. 15 km North of Orenburg, Grebeni Vil., birch (*Betula*) forest, pitfall traps, 30.IX–7.X.2007, V.O. Koz'minykh. Paratypes: 1 ♂ (PSU), 1 ♀ (ZMUM), together with the holotype; 1 ♀ (PSU), Komi Republic, Yaksha Vil., river bank, 23.IX.2003, O.L. Makarova.

DIAGNOSIS. The new species is most similar to the group of species distributed to the East of the Urals: *A. maculata* L. Koch 1879, *A. ornata* (Banks 1892) and *A. mongolica* Schenkel, 1936. From the former species, *A. makarovae* differs in the smaller body size, the shape of the embolic base (triangle in *A. maculata*) and the wider epigyn-



Figs 1–4. *Agroeca makarovae* sp.n.: 1 — palp dorsally, 2 — palp tibia laterally, 3 — epigyne, 4 — spermathecae. Scale bar 0.1 mm.  
Рис. 1–4. *Agroeca makarovae* sp.n.: 1 — палец снизу, 2 — голень пальца сбоку, 3 — эпигина, 4 — эндогина. Масштаб 0,1 мм.

nal fovea. From two other species, the male of new species can be distinguished by the embolic shape, which is characterized by the more narrow, not rounded base and the shorter, not ring-shaped apical part; the female can be distinguished by the median position of the epigynal pockets and the divergent endogynal ducts (two other species have the pockets at the forepart of epigyne and the connivent endogynal ducts).

By general appearance, the new species resembles species of *Scotina*, particularly those of *Scotina celans* (Black-

wall, 1841), but clearly differs from it by the leg spination (the genus *Scotina* is characterized by numerous spines of metatarsi, 6 to 13, and tibiae, 6 to 22; see Grimm & Vilbel, 1986).

DESCRIPTION. Male. Body yellow-grey, 4.6 (4.5–4.7) long. Carapace 2.8 (2.7–2.9) long, 2.1 wide, with the pattern of dark spots, with radial lines from the fovea to margins, and with thin black edging. Abdomen with dark spots dorsally. Tibia and metatarsus I with two pairs of ventral setae. Leg formula: 4123. Leg measurements see in the Table.

Table 1. Leg measurements of *Agroeca makarovae* sp.n.  
Таблица 1. Размер ног *Agroeca makarovae* sp.n.

Leg №№	Femur	Patella & tibia	Metatarsus	Tarsus	Total
<b>Male</b>					
I	1,9(1,8–2,0)	2,4(2,3–2,5)	1,3(1,3–1,4)	1,0(1,0–1,1)	6,6(6,3–7,0)
II	1,7(1,6–1,8)	2,1(2,0–2,2)	1,2(1,2–1,3)	0,9(0,9–1,0)	5,9(5,6–6,2)
III	1,6(1,5–1,8)	1,8(1,7–1,8)	1,5(1,4–1,5)	0,9(0,9–1,0)	5,8(5,6–6,0)
IV	2,2(2,1–2,3)	2,7(2,5–3,0)	2,4(2,3–2,4)	1,2(1,1–1,2)	8,4(8,0–8,8)
<b>Female</b>					
I	2,1(2,1–2,2)	2,7(2,6–2,8)	1,3(1,3–1,3)	1,1(1,0–1,1)	7,1(7,0–7,3)
II	1,9(1,9–2,0)	2,4(2,4–2,5)	1,3(1,3–1,4)	1,1(1,1–1,1)	6,7(6,5–7,0)
III	1,8(1,7–1,9)	2,2(2,2–2,2)	1,6(1,5–1,7)	1,0(1,0–1,1)	6,7(6,5–6,9)
IV	2,5(2,4–2,6)	3,1(3,0–3,2)	2,7(2,6–2,7)	1,3(1,3–1,3)	9,5(9,4–9,7)

Chelicera promargin with three teeth and retromargin with two teeth.

Palp apically with the embolus (Fig. 2). The embolic base placoid, with lateral knob; embolic tip thin and intorted. Tibial apophysis tabulate and strong, becoming thinner in the apical half and in its tip (Fig. 2).

Female. Body 6.7 (6.2–7.1) long. Proportions of the carapace and the coloration as in male. Leg measurements see in the Table. Epigyne narrow-triangular (Fig. 3). The epigynal pockets are situated medially. Spermathecae S-shaped, diverge from the medial line of the epigyne (Fig. 4).

ETYMOLOGY. The species is named after Dr. Olga L. Makarova (Moscow, Russia), who collected a part of the type series of this species from the North Urals.

#### Fam. LYCOSIDAE

##### *Pardosa fulvipes* (Collett, 1875)\*

MATERIAL. 5 ♂♂, 20 ♀♀, 2, bottomland *Salix* thicket with herbs, multiherbaceous meadow, bog with dwarf *Betula* and grass, VI & VIII.2007, DK.

##### *Pardosa indecora* L. Koch, 1879

MATERIAL. 12 ♂♂ (PSU-4641), 1, flood plain of Pechora River, 2007, DK; 10 ♂♂, 5 ♀♀, 4, *Abies* forest with high-herbs, elfin woodland, alpine meadow, VII.2007, DK.

##### *Pardosa lapponica* (Thorell, 1872)

MATERIAL. 1 ♀, 4, bog with dwarf *Betula* and grass, VII.2007, DK.

##### *Pardosa lasciva* L. Koch, 1879

MATERIAL. 4 ♂♂, 2, *Picea* forests with green moss or with herbs, meadow, VI.2007, DK.

##### *Pardosa sphagnicola* (F. Dahl, 1908)

MATERIAL. 1 ♀ (PSU-3279), 1, bog with *Alnus*, 22–26.IX.2003, O.L. Makarova; 3 ♂♂, 8 ♀♀, 1, bog with *Pinus*, bottomland meadow, paludal *Pinus* forest with *Carex* and *Ledum*, 03–08.07.2007, DK.

##### *Pirata praedo* Kulczyński, 1885\*

*Pirata praedo* Kulczyński, 1885, p. 56, Tab. XI, fig. 34a–c (♂♀)

*Pirata praedo*: Logunov, 1992, p. 60, fig. 6a–r (♂♀)

MATERIAL. 1 ♀ (PSU-4616), 2, grassy bog with dwarf *Betula*, VI.2007, DK.

REMARKS. This species was originally described from Kamchatka [Kulczyński, 1885]. Recently, the species was

re-examinate and redescribed by Logunov [1992] on the basis of the materials collected in Khabarovsk Province and Tuva Republic. Later, it has been found in some regions of Siberia and the Russian Far East (see map in Marusik *et al.* [2000]): Magadan Region [Marusik *et al.*, 1992], Yakutia Republic [Koponen & Marusik, 1992; Marusik *et al.*, 1993, 2004], Buryatia [Danilov, 1995] and Amur Region [Seyfulina, 2006]. The Pechoro-Ilychskiy Reserve is the westernmost locality of the species. New to the Urals. The Siberian *P. praedo* is vicarious to the West-Eurasian nemoral *P. tenuitarsis* Simon, 1876, which is extremely similar to the former species. Besides, small but clear difference in the copulatory organs [see Logunov, 1992], *P. praedo* differs from the latter one in the body colour and pattern: the carapace of *P. praedo* with yellow lateral stripes (absent in *P. tenuitarsis*) and the abdomen grey without dark cross spots.

##### *Pirata piscatorius* (Clerck, 1758)

MATERIAL. 1 ♂, 1 ♀, 2, bog with dwarf *Betula* and grass, VII.2007, DK.

#### Fam. PHILODROMIDAE

##### *Philodromus cespitum* (Walckenaer, 1802)

MATERIAL. 1 ♀, 2, meadow, VI.2007, DK.

REMARKS. Other species — *Philodromus aureolus* (Clerck, 1758), has been recorded to Pechoro-Ilychskiy Reserve by Pakhorukov [Vasilevitch & Pakhorukov, 1975; Utochkin & Pakhorukov, 1976; Pakhorukov, 1980] and Utochkin [Utochkin, 1988]. We account these indications erroneous.

#### Fam. SALTICIDAE

##### *Dendryphantès rudis* (Sundevall, 1832)\*

MATERIAL. 1 ♀ (PSU-4647), 1, paludal *Pinus* forest with *Carex* and *Ledum*, 03.VII.2007, DK.

REMARKS. Another species, viz. *Dendryphantès hastatus* (Clerck, 1758), has been recorded from the Pechoro-Ilychskiy Reserve by Pakhorukov [Utochkin & Pakhorukov, 1976; Pakhorukov, 1980]. *D. hastatus* was not found in our numerous collections from the Urals, and it is known to us from literature records only. The record of *D. hastatus* from the Pechoro-Ilychskiy Reserve seems to be doubtful and needs to be verified by specimens.

## Fam. TETRAGNATHIDAE

*Tetragnatha dearmata* Thorell, 1873

MATERIAL. 1 ♂, 2, meadow, VI.2007, DK.

## Fam. THERIDIIDAE

*Euryopsis flavomaculata* (C.L. Koch, 1836)MATERIAL. 1 ♂ (PSU-4640), 1, fire-site of *Pinus* forest, 30.VI–02.VII.2007, DK.

## Fam. THOMISIDAE

*Ozyptila arctica* Kulczyński, 1908MATERIAL. 1 ♀, 4, mossy *Salix* thicket, VII.2007, DK.*Ozyptila praticola* (L. Koch, 1837)\*

MATERIAL. 1 ♂, 4, low-grasses meadow, VII.2007, DK.

*Ozyptila trux* (Blackwall, 1846)MATERIAL. 1 ♀ (PSU-3247), 1, *Picea* forest with green moss, 23.IX.2003, O.L. Makarova; 1 ♀, 1, *Betula-Pinus* forest, 22.V.2007, DK.*Xysticus obscurus* Collett, 1877MATERIAL. 1 ♂, 2, *Picea* forest with green moss and whortleberry (*Vaccinium myrtillus*), VIII.2007, DK.

## Fam. ZORIDAE

*Zora spinimana* (Sundevall, 1833)MATERIAL. 1 ♀ (PSU-3286), 1, *Picea* forest with *Sphagnum*, 23–27.IX.2003, O.L. Makarova.

ACKNOWLEDGEMENTS. We are most grateful to Dr O.L. Makarova (Institute of Ecology and Evolution, Moscow, Russia), A.A. Kolesnikova (Institute of biology, Syktyvkar, Komi Republic, Russia) and V.O. Koz'minykh (Perm, Russia) who supplied us with the spider material. We are also grateful to A.V. Bobretsov (Pechoro-Ilychskiy Reserve, Russia) for the comprehensive help and support. This work has been supported in part by the Russian Foundation for Basic Research (project # 07-04-96001).

## References

- Danilov S.N. 1995. [New data on the spiders of the Dzherghinskiy Reserve] // Bioraznoobrazie ecosystem Pribaikal'ya. Ulan-Ude. No.1. P.53–64 [in Russian].
- Eskov K.Yu. 1988. [Spiders (Aranei) of Middle Siberia] // Materialy po faune Sredney Sibiri i prilozhashchikh rayonov Mongolii. Moscow. P.101–155 [in Russian].
- Esyunin S.L. 2006. Remarks on the Ural spider fauna (Arachnida: Aranei). 11. New faunistic records // Arthropoda Selecta. Vol.14. No.4. P.329–337.
- Esyunin S.L., Efimik V.E. 1996. Catalogue of the spiders (Arachnida, Aranei) of the Urals. Moscow: KMK Scientific Press Ltd. 229 p.
- Grimm U., Vilbel B. 1986. Die Clubionidae Mitteleuropas: Corinninae und Liocraninae (Arachnida, Araneae) // Abh. Natur. Vereins in Hamburg. No 27. S. 1–91.
- Koponen S., Marusik Yu.M. 1992. Spiders (Aranei) from Central Yakutia, Siberia // Entomol. Fennica. Vol.3. P.163–166.
- Kulczyński W. 1885. Araneae in Camtschadalia a Dre B. Dybowski collectae // Pam. Wydz. matem.-przyr. Akad. Umiej. Krakow. T.11. P.1–60.
- Logunov D.V. 1992. [To the spider fauna of the Bolshekhokhtsyrsky Reserve. I. Families Araneidae, Lycosidae, Philodromidae, Tetragnathidae, Theridiidae, Thomisidae] // Sib. biol. zhurnal. No.4. P.56–68 [in Russian].
- Marusik Yu.M., Eskov K.Yu., Kim J.P. 1992. A check-list of spiders (Aranei) of Northeast Asia // Korean Arachnol. Vol.8. No.1–2. P.129–158.
- Marusik Yu.M., Eskov K.Yu., Koponen S., Vinokurov N.N. 1993. A check-list of the spiders (Aranei) of Yakutia, Siberia // Arthropoda Selecta. Vol.2. No.2. P.63–79.
- Marusik Yu.M., Koponen S., Potapova N.K. 2004. Spiders (Aranei) from Oymyakon, the cold pole of the northern hemisphere (Yakutia, Siberia) // Arthropoda Selecta. Vol.13. No.1–2. P.69–75.
- Marusik Yu.M., Logunov D.V., Koponen S. 2000. Spiders of Tuva, South Siberia. Magadan. 252 p.
- Ovtsharenko V.I. 1982. [A systematic list of the spider family Gnaphosidae (Aranei) of the European part of the USSR and the Caucasus] // Entomol. obozr. Vol.61. No.4. P.830–844 [in Russian].
- Pakhorukov N.M. 1977. [Materials on the spider fauna of the eastern slope of the North Urals]. Perm. 26 p. (Deposited in VINITI, No 4208–77) [in Russian].
- Pakhorukov N.M. 1979. [Spiders of the Northern Urals (an ecofaunistic review)] [Autoreferate of the Thesis of Candidate of Biol. Sci. Degree]. Leningrad. 22 p. [in Russian].
- Pakhorukov N.M. 1980a. [Spiders of the Yaksha profile] // Vzaimosvyazi komponentov lesnykh i bolotnykh ekosystem sredney taigi Priuraliya. Leningrad: Nauka. P.160–171 [in Russian].
- Pakhorukov N.M. 1980b. [Characteristic of the distribution of the spiders of low stages of the northern Cisural taiga] // Aktual'nye problemy obschestvennykh, estestv. i tekhnicheskikh nauk. Perm. P.155–156 [in Russian].
- Pakhorukov N.M. 1981. [On the study of the spider family Linyphiidae in the fauna of the USSR forest zone] // Fauna i ekologiya nasekomykh. Perm. P.71–85 [in Russian].
- Pakhorukov N.M., Utochkin A.S. 1977a. [Four spider species (Aranei) from the northern Urals new to the USSR fauna] // Vestnik zool. No.4. P.91–92 [in Russian].
- Pakhorukov N.M., Utochkin A.S. 1977b. [Spider species of the family Linyphiidae (Aranei) from the northern Urals, little-known and new to the fauna of the USSR] // Entomol. obozr. Vol.56. No.4. P.907–911 [in Russian].
- Seyfulina R.R. 2006. A contribution to the knowledge of the spider fauna (Arachnida: Aranei) of Russia: new records for the Amur Area // Arthropoda Selecta. 2005. Vol.14. No.3. P.271–279.
- Simon E. 1891. Liste des Arachnides recueillis par M. Ch. Rabot dans la Sibirie occidentale, en 1890 // Bull. Soc. Zool. Fr. T.16. S.107–109.
- Utochkin A.S. 1988. [To the crab-spider fauna (Aranei, Thomisidae) of the Urals] // Fauna i ekologiya paukoobraznykh. Perm. P.9–14 [in Russian].
- Utochkin A.S., Pakhorukov N.M. 1976. [Materials on the spider fauna of the Reserve] // Trudy Pechoro-Ilychskogo gos. zapovednika. Syktyvkar. No.13. P.78–88 [in Russian].
- Vasilevich V.I., Pakhorukov N.M. 1975. [Distribution of spiders in relation to the plant cover in Cisuralian middle taiga] // Doklady AN SSSR. Vol.224. No.2. P.460–463 [in Russian].
- Woźny M., Czajka M. 1985. *Bathyphantes eumenis* (L. Koch, 1879) (Aranei, Linyphiidae) in Poland, and its synonyms // Polskie Pismo Ent. Vol.55. P.575–582.