

## *Typhochrestus pekkai* sp.n., a new erigonid spider from Corsica (Araneae: Linyphiidae)

## *Typhochrestus pekkai* sp.n., новый вид эригонид из Корсики (Araneae: Linyphiidae)

Robert Bosmans<sup>1</sup> & Pierre Oger<sup>2</sup>  
Р. Босманс<sup>1</sup>, П. Огер<sup>2</sup>

<sup>1</sup> Terrestrial Ecology Unit, Ledeganckstraat 35, B-9000 Gent, Belgium. E-mail: rop\_bosmans@telenet.be

<sup>2</sup> Rue du Grand Vivier 14, 4217, Waret l'Évêque, Belgium. E-mail: pierre55@skynet.be

KEY WORDS: *Typhochrestus*, systematics, new species, Corse, endemic.

КЛЮЧЕВЫЕ СЛОВА: *Typhochrestus*, систематика, новый вид, Корсика, эндемик.

ABSTRACT. The male of the new species *Typhochrestus pekkai* sp.n. is described from Corsica, France is. It is probably another endemic species of the island.

РЕЗЮМЕ. Описан по самцу *Typhochrestus pekkai* sp.n. из Корсики (Франция). Очевидно, это ещё один эндемик острова.

### Introduction

Species of the genus *Typhochrestus* Simon, 1884 are among the smallest erigonid spiders. The species of Europe and North Africa are fairly well-known by studies of Thaler [1980, 1984], Bosmans & Abrous [1990], Wunderlich [1995] and Bosmans [2008]. Actually, 33 species have been described. All species, except for *Typhochrestus digitatus* (O. Pickard-Cambridge, 1872) have limited distribution areas.

According to Helsdingen [2013], the genus *Typhochrestus* does not occur in Corsica. However, Thaler [1990] identified and described a specimen collected in Corsica as *Typhochrestus alticola* Denis, 1953, a species described from the Pyrénées. Bosmans [2008] redescribed *T. alticola* and considered Thaler's specimen to be another species. In the present paper, this species is described on recently collected material in Corsica.

### Methods

All measurements are given in mm.

Abbreviations: PE, PM and PL — posterior eyes, posterior median eyes and posterior lateral eyes; TbMtI — relative position of trichobothrium on metatarsus I.

### Systematics

*Typhochrestus pekkai* n.sp.  
Figs 1–7.

*Typhochrestus* cfr. *alticola*: Thaler, 1990: 589, f. 40, 44 (♂).

TYPE MATERIAL: Holotype ♂ and paratype 1 ♂ from “France, Corse, Corse du Sud, S. Ziccavo, Plateau du Coscione, refuge de Bucchinera, 1520 m, 7.XI.2013, P. Ponel leg.”; deposited in the Muséum d'Histoire naturelle de Paris.

FURTHER MATERIAL: 1♂ Corse du Sud: Col de Sevi, ca. 1200 m, meadow with *Juniperus*, gorse, fern and scree, 27.IX.1974, leg. K. Thaler, collection K. Thaler, Innsbruck; not examined.

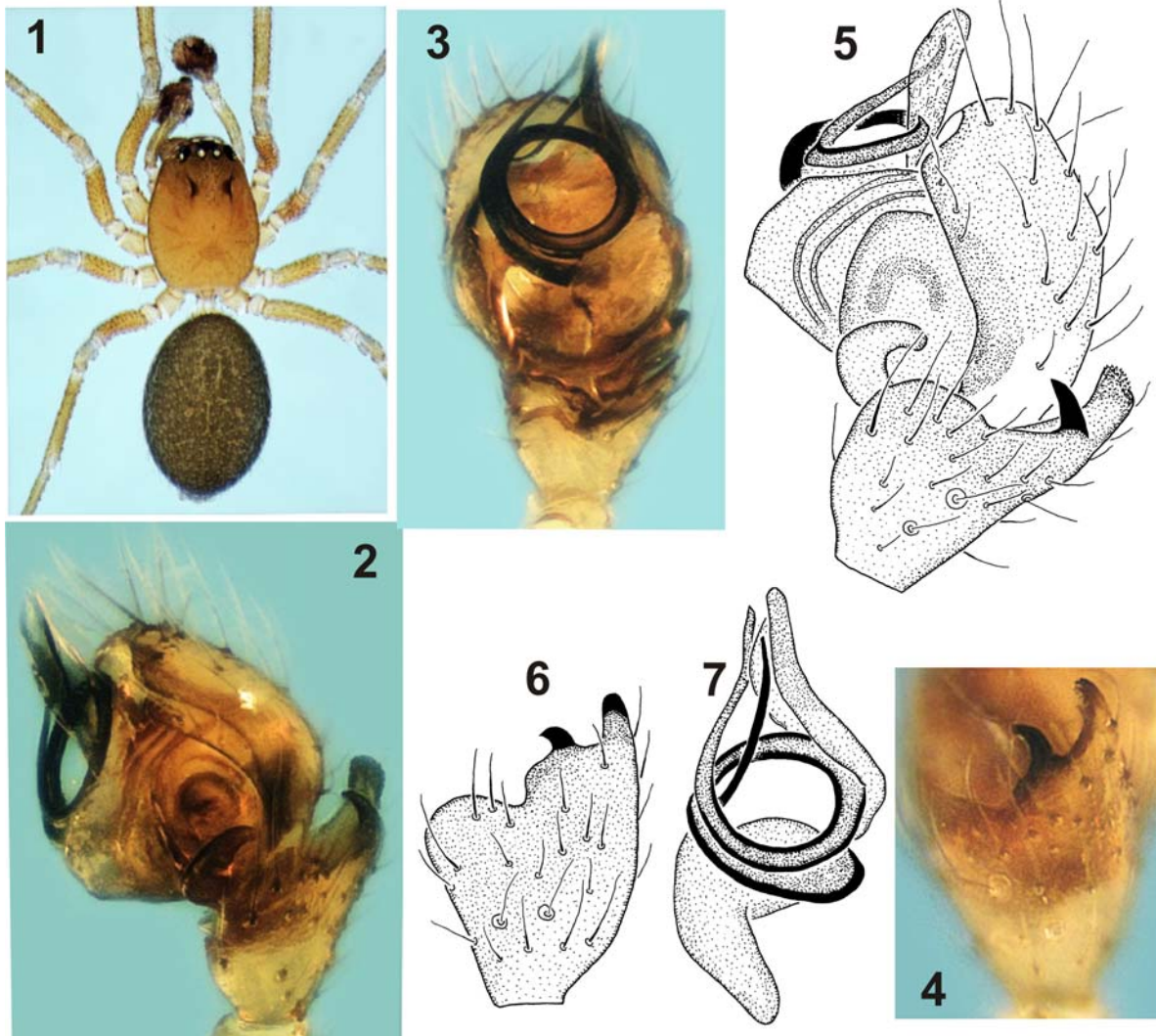
ETYMOLOGY. The species is dedicated to Pekka T. Lehtinen in honour of his profound studies on systematics of spiders.

DIAGNOSIS. *Typhochrestus pekkai* sp.n. can only distinguished from other *Typhochrestus* species by differences in the male palp: the shape of the tibial apophysis, the number of coils of the embolus and the shape of the embolar apophysis. By the shape of the tibial apophysis, it is close to *T. curvicervix* (Denis, 1964) from Tunisia, but in that species the median apophysis at the retrolateral side of the tibia is larger and more curved (Figs 14–16). By the length of the embolus it is close to *T. berniae* Bosmans, 2007 from Spain but in that species the tibial apophyses are quite different (Figs 8–10). The straight embolar apophysis is only shared with *T. bifurcatus* Simon, 1884 from Morocco and Algeria but in that species the apophysis is much longer (Figs 11–13).

DESCRIPTION. Male (holotype). Total length 1.3 mm; carapace 0.58–0.59 long, 0.42–0.43 wide. Colour: Carapace pale yellowish brown with infuscated cephalic part; legs pale yellowish; abdomen grey. Carapace slightly elevated behind the PE, with scattered hairs in that region; postocular sulci elongated, slightly more than 2 times longer than the diameter of the PE (Fig. 1). PL separated by their diameter, from the PL by 1.5 times their diameter.

Chelicerae with 7 well-developed stridulating ridges. Spine formula 2221, but spines shorter than half the diameter of the tibia, hardly longer than the hairs; TbMt I = 0.55.

Palp as in Figs 2–7; tibia at retrolateral side with rounded dorsal apophysis, strongly curved and pointed



Figs 1–7. Male of *Typhochrestus pekkai* sp.n.: 1 — habitus, dorsal; 2 — palp, retrolateral; 3 — palp, ventral; 4 — palpal tibia, dorsal; 5 — palp retrolateral; 6 — palpal tibia, dorsal; 7 — embolic division, ventral.

Рис. 1–7. Самец *Typhochrestus pekkai* sp.n.: 1 — габитус, сверху; 2 — пальпа, ретролатерально; 3 — пальпа, снизу; 4 — голень пальпы, сверху; 5 — пальпа, ретролатерально; 6 — голень пальпы, сверху; 7 — эмболюсный отдел, снизу.

median apophysis and lobe-like ventral apophysis; embolus threadlike, describing 1.5 circle, terminally pointing in anterior direction; embolar apophysis straight, pointed, originating at retrolateral side of embolus; embolar membrane wide.

Female. Unknown.

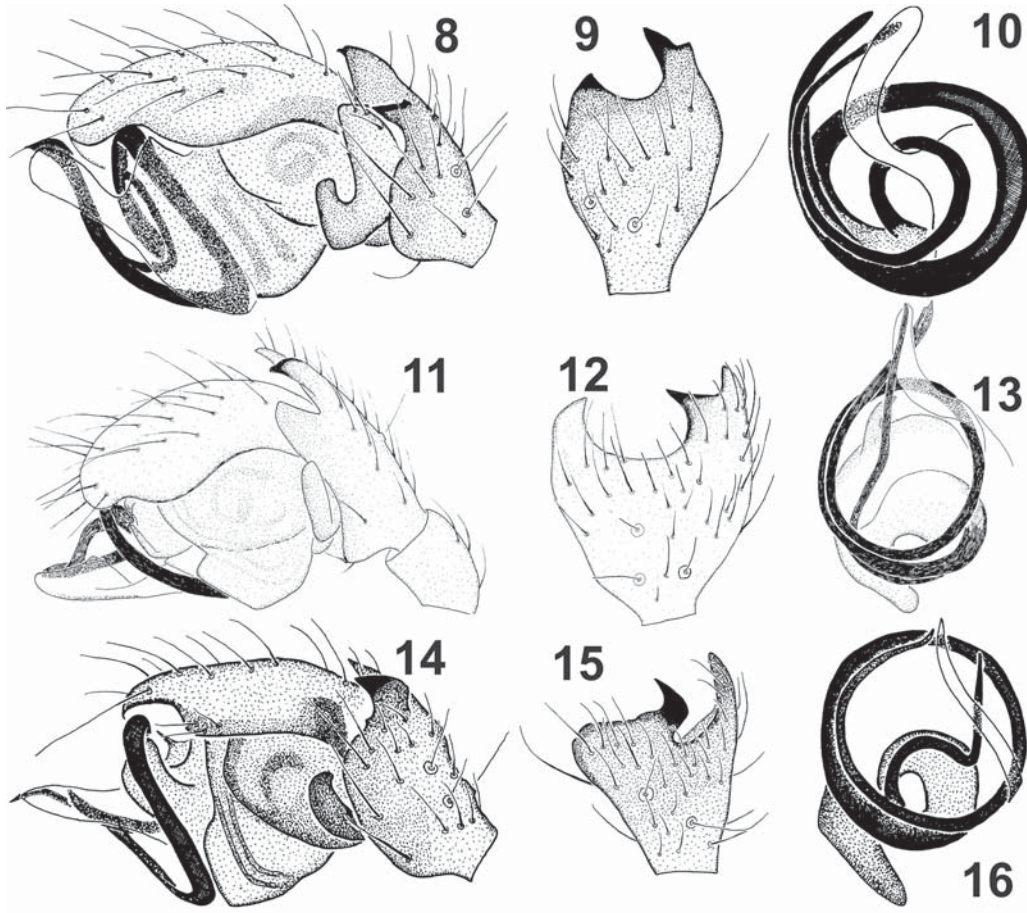
**DISTRIBUTION.** Only known from Corsica.

**ACKNOWLEDGMENTS.** Philippe Ponel is thanked for making available the specimens collected in Corsica. Barbara Knoflach is thanked for corresponding the locality data of the specimen studied by Konrad Thaler.

## References

- Bosmans R., Arous O. 1990. The genus *Typhochrestus* Simon 1884 in North Africa (Araneae: Linyphiidae: Erigoninae). *Studies on North African Linyphiidae V.* // Bulletin de l'Institut Royal de Sciences naturelles de Belgique. T.60. P.19–37.
- Bosmans R. 2008. A new contribution to the knowledge of the genus *Typhochrestus* Simon in Europe and North Africa (Araneae: Linyphiidae) // *Révista Ibérica de Aracnología*. Vol.16. P.83–92.
- Heldsingen P.J., van. 2013. Araneae. Fauna Europaea. Database European spiders and their distribution – Distribution – Version 2013.1. <http://www.european-arachnology.org/reports/fauna.shtml>
- Thaler K. 1980. Über wenig bekannte Zwergspinnen aus den Alpen-VI (Arachnida: Aranei, Erigonidae) // *Revue suisse de Zoologie*. T.87. P.579–603.
- Thaler K. 1984. Sechs neue Mediterrane Zwergspinnen (Aranei, Linyphiidae: Erigoninae) // *Archives de Sciences de Genève*. T.37. P.193–210.
- Wunderlich J. 1995. Beschreibung bisher unbekannter Arten der Baldachinspinnen aus der Östlichen Mediterraneis (Arachnida: Araneae: Linyphiidae) // *Beiträge zur Aracnologie*. Bd.4. S.655–686.

Responsible editor Yuri M. Marusik



Figs 8–10. Male palp of *Typhochrestus berniae* (8–10), *T. bifurcatus* (11–13) and *T. curvicervix* (14–16): 8, 11, 14 — retrolateral; 9, 12, 15 — ventral; 10, 13, 16 — tibia, dorsal. 8–10, 14–16 — after Bosmans [2008]; 11–13 — after Bosmans & Abrous [1990].

Рис 8–10. Пальпа самца *Typhochrestus berniae* (8–10), *T. bifurcatus* (11–13) и *T. curvicervix* (14–16): 8, 11, 14 — ретролатерально; 9, 12, 15 — вентрально; 10, 13, 16 — голень, сверху. 8–10, 14–16 — по Bosmans [2008]; 11–13 — по Bosmans & Abrous [1990].